

BUILDING FOR THE FUTURE

## Project Fact Sheet

**South Stand, Tallaght Stadium,  
Whitestown Way, Tallaght, Dublin 24.**

South Dublin County Council



## South Stand, Tallaght Stadium



**PROJECT:** South Stand, Tallaght Stadium

**CLIENT:** South Dublin County Council

**VALUE:** €2.5 million

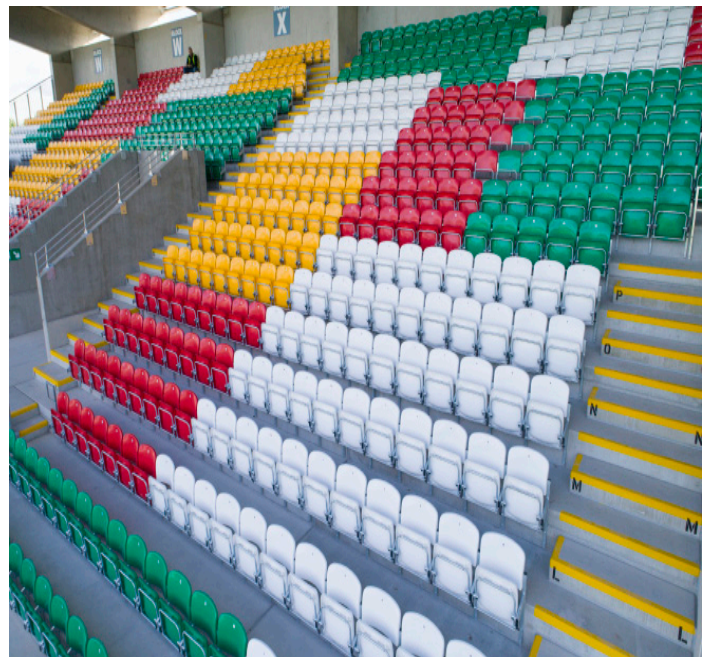
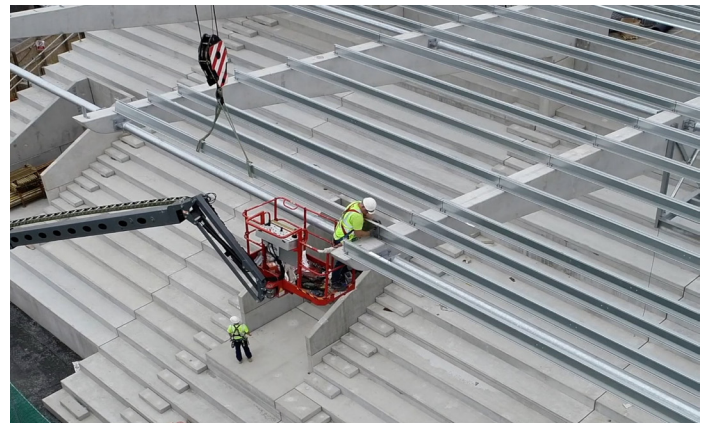
**STAGE:** Completed November 2018

### DESCRIPTION:

The project consisted of the design and construction, fit out and completion of a roofed precast concrete, stand-alone' single tier 'spectator stand' providing covered seated viewing accommodation for up to 2,195 football spectators. The Stand included a glazed screen to the west gable, safety rails to the east gable and ancillary accommodation constructed in under-croft spaces.

Provision of a TV Cameraman Platform suspended from the roof structure over, (to the rear of the central structural bay of the stand) and will include; gated access steps, gantry walkway and platform, balustrades and handrails. The works also comprised construction of a new arched exit gateway and gates which match the existing adjoining gates and openings in appearance, function, size and operability.

Please click [here](#) to view Project Video:





### SCOPE OF WORKS:

The South Stand was a 'stand-alone' single tier 'spectator stand' of approximate dimensions; 19.2m wide x 61.2m long x 13.6m high which provides covered seated accommodation for 2,183 spectators.

The stand included a glazed screen to the west gable, safety rails to the east gable and ancillary accommodation constructed in under-croft spaces. The works also comprised construction of a new arched exit gateway and gates which shall equal/match the existing adjoining gates and openings in appearance, function, size and operability. The Stand was constructed from a Precast Concrete Frame. The roof of the Third Stand was profiled single skin, colour coated steel to match the existing east stand. External and internal colours also equal/matched those on the existing east stand.

The building is configured as follows:

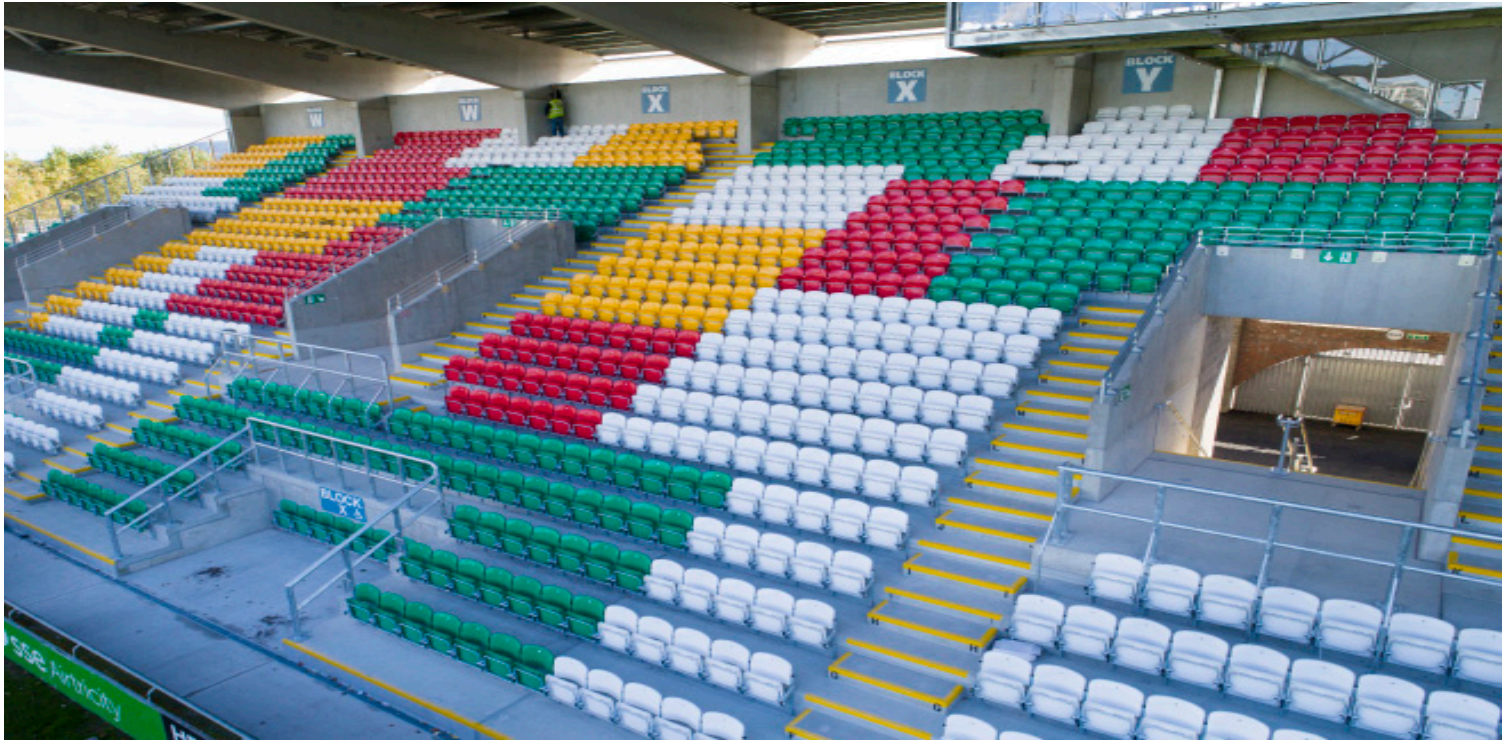
**Substructure:** Reinforced concrete strip and pad foundations with upstand/ pockets formed for connection of precast concrete frame. Rising walls were in load bearing masonry and stone subbase below ground bearing slab.

**Superstructure:** Precast concrete comprising a cantilever roof rafter supported by a raker beam supported on columns above the foundations. The rafters are braced by structural steel tubular sections and the rafters also support a TV gantry suspended on their underside. The raker beams support stepped terraces that span between the raker beams. Vomitory walls and access staircases were also built in precast concrete.

**Secondary Structure:** Below the undercroft of the raker beams load bearing masonry was configured to provide accommodation for welfare facilities. The roof was a single metal deck trapezoidal profile supported by cold-formed steel purlins. The end of the Stand was built with structural glazing at the Western End and with steel railings at the Eastern End.

ABM employed BIM technology to implement the design as follows: A BIM Execution Plan (BEP) was drafted and implemented by the ABM design team. All design elements were drafted in REVIT. A common data environment was established and shared within the ABM design team. Workshops were configured where the Federated Model was reviewed and clash detection was established and corrected. File naming conventions were established for appropriate documentation in accordance with PAS 1192. A 4D animation video was prepared to illustrate the sequencing and methodology of the precast concrete installation as generated by the BIM model.

## South Stand, Tallaght Stadium



ABM Contractors  
Unit 2b, Feltrim Business Park,  
Drynam Road, Swords,  
Co. Dublin. K67 TX95

[www.abmcontractors.com](http://www.abmcontractors.com)

T: +353 (0)1 890 0919

E: [info@abmcontractors.com](mailto:info@abmcontractors.com)

