

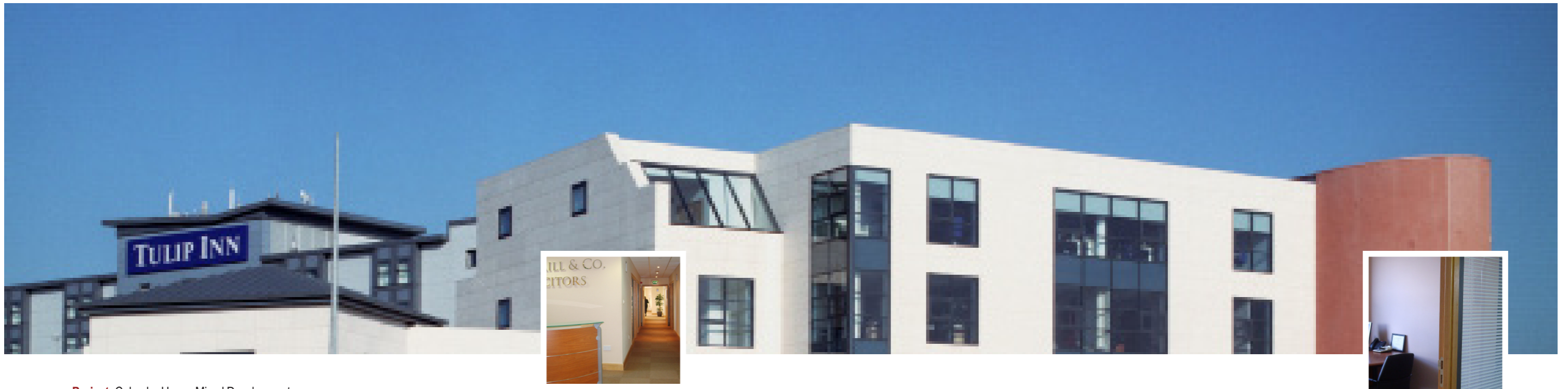


Project Fact Sheet

Columba House, Airside, Swords, Co. Dublin



Columba House, Airside



Project: Columba House Mixed Development
Value: €7m
Client: O'Leary Gilmore Architects
Stage: Completed

FACTFILE

Columba House Mixed Development
This mixed development project involved the construction and fit-out of a medical centre, offices, a fitness centre and associated landscaping and site development works at Airside Retail Park, Swords, Co. Dublin

SCOPE OF WORKS

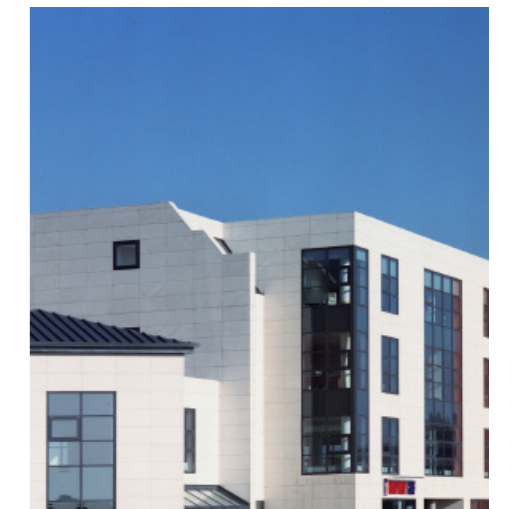
Main Building (VHI Swiftcare):
The medical centre which currently houses VHI Swiftcare and separate high-tech office accommodation was located in the main building. The construction consisted of a reinforced concrete frame and a light weight pre-insulated steel frame external leaf infill panel system, which was used instead of traditional concrete block. The exterior render and cladding panels were fixed directly to the steel frame. Using the infill panel system allowed the internal leaf to be manufactured off-site which created the following main advantages:

- Quality control – The steel frame is factory manufactured, which allows for exacting standards of quality control that ensure minimum variation for any particular batch.
- Cost of construction - Pre-fabrication can save up to 20 per cent on Columba House, Airside the structure compared to that of the traditional construction associated with materials and labour.
- Rapid Installation – As the frames are pre-fabricated, each panel can

be fixed in place quickly. Also, once the steel frame has been fitted, cladding panels or other exterior envelope components can be fitted immediately after installation, which allows for a shorter construction programme.

The exterior of the building was clad using a combination of rendered panels, Portuguese Limestone and extensive curtain walling. Façade features included a projected wrap-around glazed feature corner spanning three floor levels and a rotunda shaped main entrance.

Light Industrial Unit (Fitness Centre and Dance Studio):
A light weight industrial unit, for use as a fitness centre and crèche, was constructed as part of this development. Construction of this building consisted of a high tech unit with a portal frame structure and a first floor space created using precast slabs. The exterior of the building was clad using Kingspan microrib cladding and RW roof panels.



Columba House, Airside



ABM Contractors
Unit 2b, Feltrim Business Park
Drynam Road, Swords, Co. Dublin.

Tel: +353 (0)1 890 0919
Email: info@abmcontractors.com

www.abmcontractors.com

